



# TRADE MANUAL





# WHERE TO FIND US & CONTACT DETAILS

Lemon Tree Lodge  
31 Adelphi Terrace  
Kaikōura 7373

- ⇒ 5 min walk downtown.
- ⇒ 2hrs and 30 min from Christchurch.
- ⇒ 1h40 from Blenheim.

## Check in / Check out

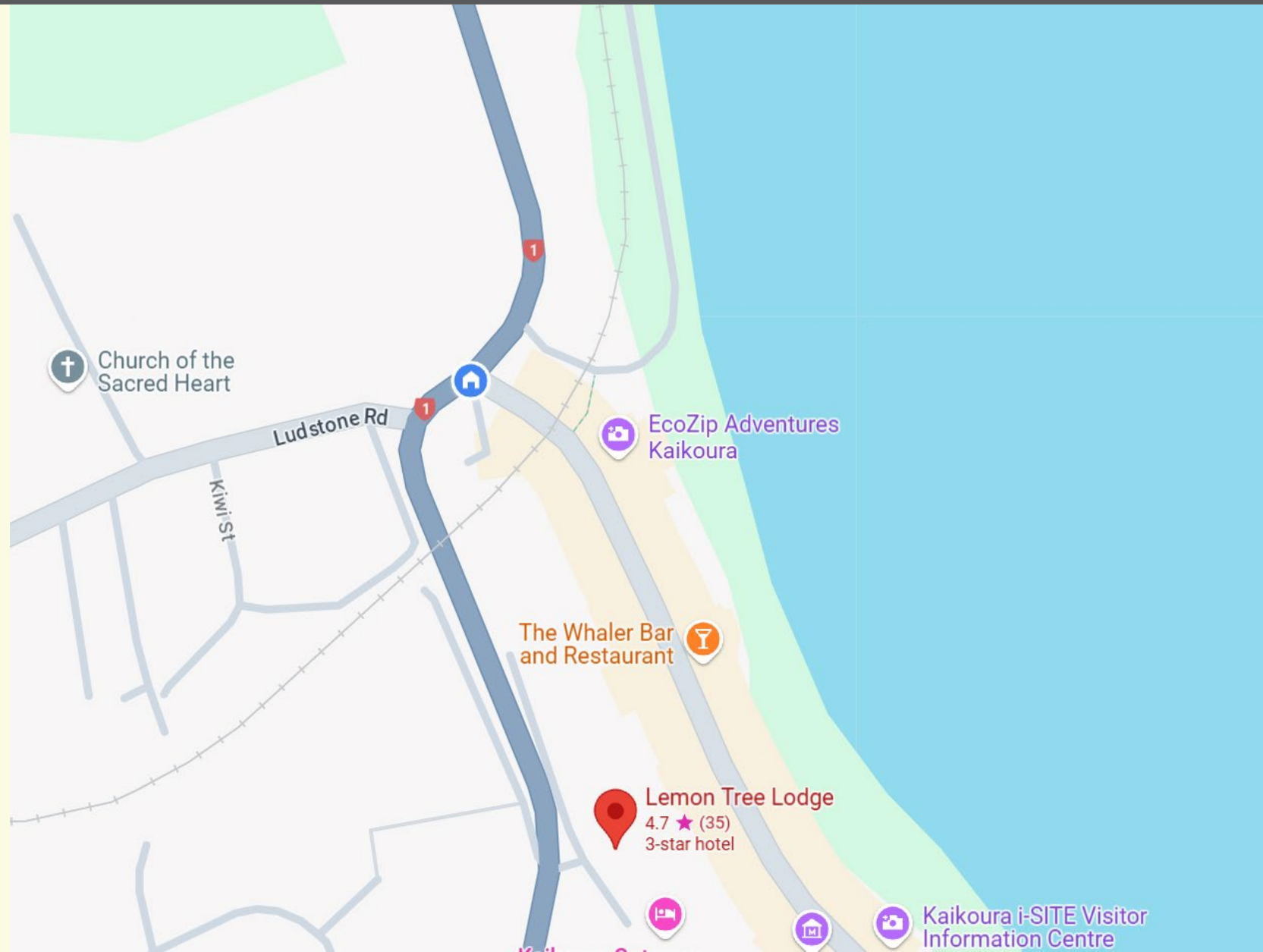
Check in from 14:00

Check out till 10:00

**Phone Number** +64 (0)3 319 7464

**Email** [info@lemontree.co.nz](mailto:info@lemontree.co.nz)

**Website:** [www.lemontree.co.nz](http://www.lemontree.co.nz)



# A WORD FROM THE OWNERS

---

Having stayed as guests at Lemon Tree Lodge more than a decade ago, we feel privileged to manage the Lodge today.

Travelling through New Zealand before starting a family, we drove through Kaikōura in 2012 and stayed a night at Lemon Tree Lodge. Little did we know that five years later we would find ourselves back in Kaikōura as a family of five, running the Lodge.

While staff is nowadays responsible for the most of the day-to-day operation, we are still hands on making sure Lemon Tree Lodge is a little sanctuary on the way of travelling guests.

**Hope your guests will enjoy their stay** and wish they will discover some of the **many beauties that Kaikōura has to offer.**

Veronika & Vlad





# ABOUT THE LODGE

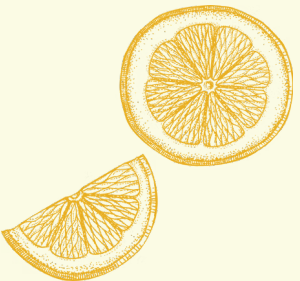
Lemon Tree Lodge is located on a little dead-end street that is just off main SH1. Its central location is **just a four-minute walk downtown**.

The Lodge is overlooking the town and has unique, **close views of both the sea and the mountains**.

The Lodge is surrounded by well settled **designed flower garden** with water and sculpture features.

Lemon Tree Lodge comprises of two buildings:

- **Ocean view building** with four rooms
- **Garden view building** with two rooms.







# THE ROOMS





# OVERVIEW

6 rooms total across 2 buildings:

- Ocean view building with 4 rooms
  - 2 suites:
    - Lavender
    - Calla Lily
  - 2 rooms:
    - Poppy Flower
    - Pineapple Lily
- Garden view building with 2 rooms:
  - Sunflower
  - Aeonium

Each room has a unique floral theme and decoration with its own private deck or a balcony.

There is a separate ocean view deck which can be enjoyed by guests from the two garden view rooms.





# LAVENDER SUITE

**Maximum occupancy:** 2 Adults



Ocean view Suite



First floor, main building



Balcony



Super king bed (185cm x 200cm)



Living room



Open walk-in wardrobe



Bathroom with shower, toilet



Hairdryer



Heating & Ceiling fan



Mini fridge



Tea and coffee facilities (Nespresso machine)



Toaster



Wi-Fi



TV





# CALLA LILY SUITE

**Maximum occupancy:** 2 Adults



Ocean view Suite



Ground floor, main building



Private deck / terrace



King bed (170 cm x 200 cm)



Living room



Bathroom with shower, bathtub and toilet



Hairdryer



Heating & Ceiling fan



Mini fridge



Tea and coffee facilities (Nespresso machine)



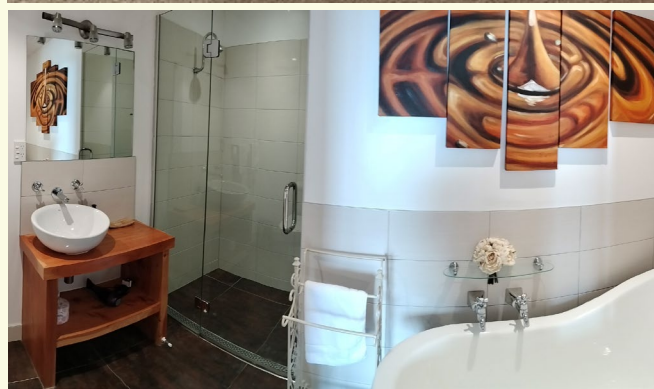
Toaster



Wi-Fi



TV





# PINEAPPLE LILY ROOM

**Maximum occupancy:** 2 Adults



Ocean view room



First floor, main building



Balcony



Queen bed (150 cm x 200 cm)



Bathroom with shower and toilet



Hairdryer



Heating & Ceiling fan



Mini fridge



Tea and coffee facilities (Nespresso machine)



Toaster



Wi-Fi



TV





# POPPY FLOWER ROOM

**Maximum occupancy:** 2 Adults



Ocean view room



Ground floor, main building



Own deck / terrace



King bed (170 cm x 200 cm)



Bathroom with shower and toilet



Hairdryer



Heating & Ceiling fan



Mini fridge



Tea and coffee facilities (Nespresso machine)



Toaster



Wi-Fi



TV





# AEONIUM ROOM

**Maximum occupancy:** 2 Adults



Garden view room



Ground floor, garden building



2 decks / terraces



Queen bed (150 cm x 200 cm)



Living room



Bathroom with shower and toilet



Hairdryer



Heating & Ceiling fan



Mini fridge



Tea and coffee facilities (Nespresso machine)



Toaster



Wi-Fi



TV



Recommended room for Honeymooners





# SUNFLOWER ROOM

**Maximum occupancy:** 4 Adults



Garden view room



Ground floor, garden building



Own deck / terrace



2 x Queen bed (150 cm x 200 cm)



Living room



Bathroom with shower and toilet



Hairdryer



Heating & Ceiling fan



Mini fridge



Tea and coffee facilities (Nespresso machine)



Toaster



Wi-Fi



TV





# ROOM AMENITIES

---

## AMENITIES

Tea and coffee amenities are supplied at the beginning of the stay. Guest can take new dishes at the kitchen at breakfast time as needed. Used dishes can be dropped anytime at the tray trolley. Room service can be requested for collection / supply of dishes.

## BREAKFAST

Included in the room rate. There are 2 different variants of breakfast.

## ROOM SERVICE

On request. Information in the Guest Compendium in the room. Full room service includes:

- Clearing used dishes and supplying new set
- Changing towels that are left on the floor
- Emptying trash bins

## HONEYMOON

Our Garden view room Aeonium is designed for guest travelling for their honeymoon.

We can provide a special welcome gift for our honeymoon guest if requested upon making the booking.

## FIRST FLOOR ROOMS

Please note that first floor rooms are not suitable for guests with mobility issues due to the staircase.

## PARKING

Available on the designated couple spots or on the street in front of the Lodge.







# THE BREAKFAST





# THE BREAKFAST BUFFET

The buffet is available in the kitchen.

Opened from **8am-9am**

Continental breakfast buffet with **boutique home-made touches**:

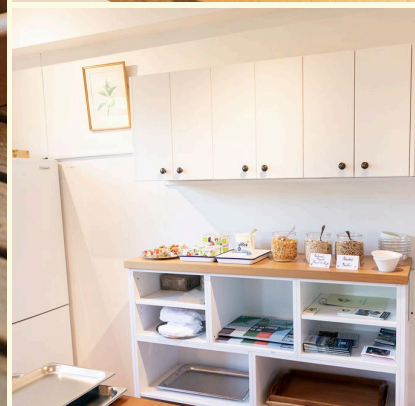
- ✓ Orange/apple juice,
- ✓ Milk,
- ✓ Bread,
- ✓ croissants/muffins,
- ✓ Spreads (butter, jams, peanut butter, honey, vegemite)
- ✓ fruit,
- ✓ granola,
- ✓ yogurt,
- ✓ hard-boiled eggs.

**Gluten or lactose free options** are available if requested prior to arrival.

Guests bring their breakfast tray to their room when they can enjoy breakfast in the privacy with the room's view.

Dishes can be left at the tray trolley in front of the kitchen or guest can request a room service for staff to collect used dishes.

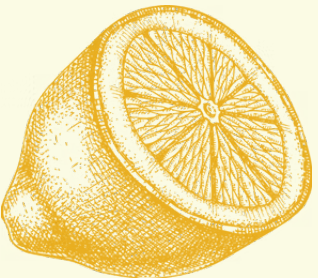
*In case of bad weather or in case guest having mobility issues, we are happy to assist to bring the breakfast to the room. Please contact duty manager during the stay if assistance is required.*





# THE BREAKFAST HAMPER

- ✓ For guests with early morning program or in low season (April to October when occupancy is lower than three rooms).
- ✓ Information to the guests is in the Welcome note if the breakfast the next day is a Buffet or Hamper.
- ✓ On request. Requests can be sent by 5pm to the quick contact from the Welcome note or can be requested by email at least one day prior to the arrival.
- ✓ Delivered to the room in the afternoon. Guests find information about the breakfast variant in the Welcome note.
- ✓ Information to the guests is in the Welcome note if the breakfast the next day is a Buffet or Hamper.







**MORE INFORMATION**





# ADDITIONAL INFORMATION

## LAUNDRY

There is no laundry service at the property.

In the Guest Compendium we offer a contact details for The Little Laundromat (39 Beach Road, next to the Beach House Café).

## KITCHEN

Kitchen is not accessible during the day. Guest can however take extra dishes such as plates or cutlery if needed for takeaway meal later in the day.

## TRAVEL LIBRARY

Guest can find a mini library in the Lodge (the lower corridor of the ocean view building) where they can borrow a book or exchange a book on their travels.

## HEALTH & SAFETY

Fire alarms are installed through-out the rooms and the whole building and there is a fire-extinguisher in each building. Fire-brigade is located just 300meters away from the Lodge.

A first-aid kit can be found next to the travelling library at the lower corridor of the ocean view building. The hospital is located just 30 meters away from the Lodge.





# SUSTAINABILITY

---

- waste sorting and recycling in **local recycling centre**.
- choice between single serve packages and **washable dishes portions** at breakfast
- milk in the room in **glass containers** when possible
- **compostable bin liners**
- **reducing frequency of wash towels**, changing towels on request only
- using **eco-friendly packed skin care**
- **composting** food scraps
- using **eco-friendly cleaning products** where possible
- **recycling coffee-capsules**







Lemon Tree Lodge  
31 Adelphi Terrace  
Kaikōura 7373

**Check in / Check out**

Check in from 14:00

Check out till 10:00

**Phone Number** +64 (0)3 319 7464

**Email** [info@lemontree.co.nz](mailto:info@lemontree.co.nz)

**Website:** [www.lemontree.co.nz](http://www.lemontree.co.nz)

