



Manakau Lodge
Kaikoura

198b Parsons Rd,
Hapuku, Kaikoura,
New Zealand 7371

manakaulodge.com

TRADE MANUAL

Exclusive Booking

Family Friendly

Premium Amenities



LOCATION

**198b Parsons Rd,
Hapuku, Kaikoura,
New Zealand 7371**

10min drive to Kaikoura town

2.5hrs to Christchurch
2hrs to Picton
1.5hrs to Blenheim

DIRECTIONS:

Turn right off Parsons Rd at large Rimu Manakau Lodge sign. Follow private driveway to the very end and park next to the lodge.

Check In: 2pm
Check out: 10am

manakaulodge.com

CONTACT

Hosts: Janice + Kim

Email: stay@manakaulodge.com

Phone: +64 (0)21 433590



ABOUT THE LODGE

Whether holidaying through Aotearoa, travelling for work, or simply in need of a well-deserved break, Manakau Lodge is the perfect place to relax, connect and explore.

We encourage guests to bring the whole family!
Children are welcome.

Guests will have exclusive use of the entire lodge. We only accommodate one group per booking. They get the whole of this beautiful rural property to themselves.

We offer exclusive adventure packages for our guests. See all that Kaikoura has to offer and make some memories at Manakau Lodge!



In the busyness of travel from one town to the next, at Manakau Lodge, guests get the chance to draw strength from the privacy and the quiet solitude; all whilst being so close to town, restaurants and other activities.



ABOUT US

“Hello! We are Janice and Kim,
happy owners of Manakau Lodge
- our slice of heaven!”

We moved to Kaikoura from
Hawkes Bay in 2021. We discovered
the lodge on a whim but
it didn't take long to fall in love
with it and beautiful Kaikoura.
Since then, we have poured so much
work and love into this place
and have quickly become locals in
Kaikoura's welcoming community!”

Janice and Kim enjoy their
Kaikoura home with their Border
Collie, two cats and 25+ chooks!

“We love to share our
slice of heaven!
Come stay in rural paradise.”





BLUE ROOM

OCEAN VIEW

Approx. 30m²

King size bed

Max occupancy 2 people

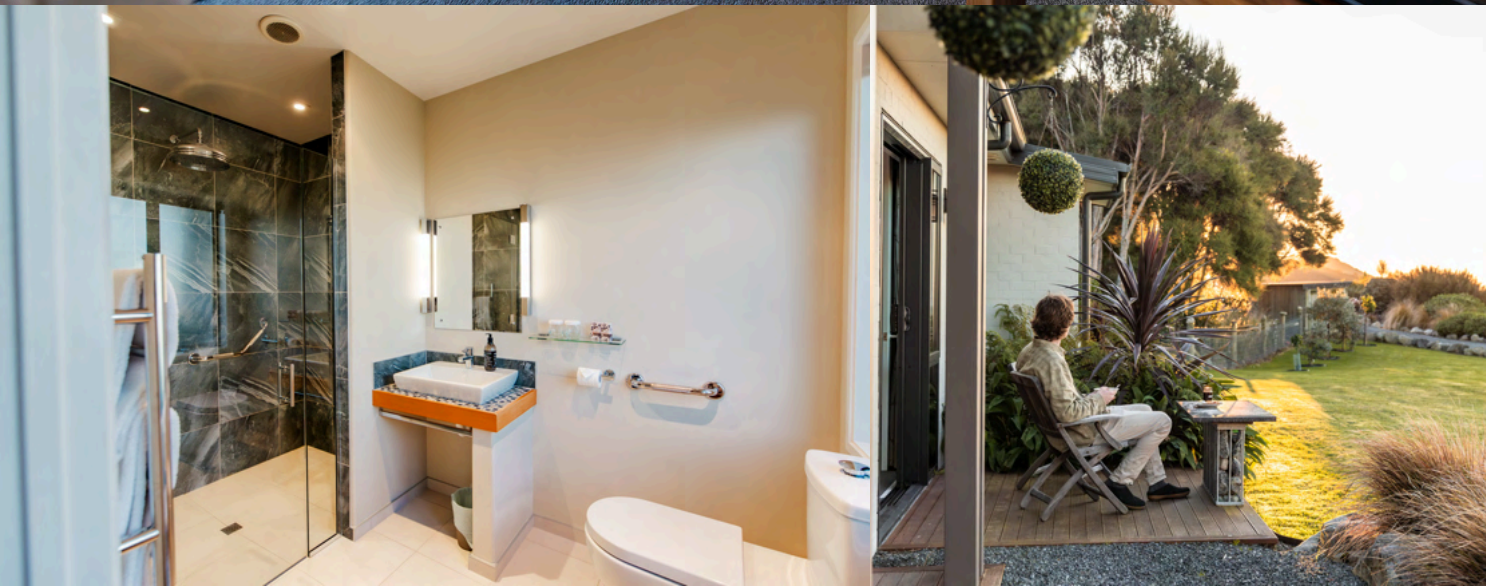
Ensuite bathroom:

- Large walk-in monsoon shower
- Heated floors
- Automatic mirror demister
- Premium toiletries

Wheelchair accessible room

Outdoor deck patio with a table & 2 chairs

Beautiful panoramic views of the countryside & ocean in the distance



GREY ROOM

MOUNTAIN VIEW

Approx. 30m²

King size bed

Max occupancy 2 people

Ensuite bathroom:

- Large walk-in monsoon shower
- Heated floors
- Automatic mirror demister
- Premium toiletries

Outdoor deck patio with a table & 2 chairs

Beautiful panoramic views of Seaward Kaikōura ranges





SALMON ROOM

OCEAN VIEW

Approx. 30m²

1 x Super King size bed or
2 x King single beds

Max occupancy 2 people

Ensuite bathroom:

- Large walk-in monsoon shower
- Large separate bath
- Heated floors
- Automatic mirror demister
- Premium toiletries

Outdoor deck patio with a table & 2 chairs

Beautiful panoramic views of countryside & ocean in the distance



GOLD ROOM

MOUNTAIN VIEW

Approx. 30m²

1 x Super King size bed or 2 x King single beds

Max occupancy 2 people

Ensuite bathroom:

- Large walk-in monsoon shower
- Large separate bath
- Heated floors
- Automatic mirror demister
- Premium toiletries

Outdoor deck patio with a table & 2 chairs

Beautiful panoramic views of Seaward Kaikōura ranges



LIVING SPACES

AMENITIES

- Log burning fire
- Max 10pax
- Free unlimited wifi
- TV with available streaming services
- Panoramic views
- Covered entrance with ramps and wide doorways
- Black out curtains
- Heating/cooling
- 3 large leather sofas
- Puzzles, games, books
- Sliding doors to deck
- Rimu picnic table
- BBQ facilities with supplied gas
- Spa pool
- Towels/linens provided
- Telescope
- 2 fold out beds
- 1 baby portacot



LIVING SPACES



- Large stainless steel island
- Fridge, dishwasher, oven, stove, toaster, microwave
- Coffee machine
- Large dining table with 8 chairs
- All cooking/dining utensils
- 3 stools at kitchen island
- Full breakfast hamper provided
- Coffee and tea supplied
- Washer and dryer
- Local experience and dining information in binders
- Helipad short walk from front door





HELIPAD

Guests can make lifelong memories when they stay with us by stepping out the front door into flight!

We have a helipad in the paddock just across from the Lodge.

Guests can book their preferred helicopter company to pick them up from the helipad and drop them off back home.

- Explore the Mt. Fyffe summit behind the Lodge
- Get a birdseye view of whales, dolphins and other sealife
- Take a scenic tour with a special someone





PRIVATE CHEF

EXCLUSIVE FOR MANAKAU LODGE GUESTS

Take your holiday to the next level with an in-house chef at Manakau Lodge!

Invite **Rob Cullen** to craft an amazingly delicious dinner for you. Enjoy the scenery, an adventure, and relaxation before enjoying an incredible meal.

This is an exclusive offer to our guests. You can book this gourmet experience when you book with us.

5-course Fine Dining Experience - With wine match

**Family sharing meal
Beverage package - additional**

BYOB accepted

Rob Cullen is currently Executive Chef for the NZ International Convention Centre. a Michelin-trained Chef with experience working under esteemed names in the culinary industry, notably Raymond Blanc and Albert Roux.

His last international role was as the Executive Chef for King Abdullah at the Royal Palace in Jordan.

Chef Cullen is passionate about highlighting local producers and creating fine dining experiences.



Tempered chocolate 'pebbles' filled with chocolate mousse on a crunchy crumble



ADVENTURES

EXCLUSIVE FOR MANAKAU LODGE GUESTS

Guests can take an ATV Polaris excursion to Giant Tōtara (the South Island's largest tōtara tree).

This is an exciting ride through gorgeous farmlands and over rushing rivers. They can then take a short walk to the tree guided by us.

This is an exclusive arrangement we have with a local farmer to use his property for our Polaris excursions.

Guests get to see untouched bushland, hilltop views and more!

It's a great way to get to know what Kaikoura is all about!



LOCAL WALKS

EXPLORE KAIKOURA

Manakau Lodge sits on a plateau above the Hapuku River, alongside which runs a beautiful off-road walking track through native bush that takes you right to the ocean (4kms each way). This can be walked or cycled and is readily accessible from the lodge.

There are many other local walks as well. The "Fyffe-Palmer" is a favourite as it also winds through a stunning native forest with bridges crossing picturesque waterfalls.

There is nothing like unwinding by spending some time out in nature. We highly recommend exploring everything Kaikoura has to offer while you stay with us.



SUSTAINABILITY

Our Commitment to Sustainability: Prioritizing Social and Environmental Responsibility
We love our one and only earth and believe in doing our absolute best to care for her and for the generations to come that will inherit her!



Take a look at a few examples of our sustainability practices.
You can find many more on our website: manakaulodge.com

WATER - Manakau Lodge gets its water from the nearby mountains through a system managed by a local organization.

WASTE - food waste is collected and either used for our compost system which in turn is used in the gardens or if appropriate, it is fed to our 36 chickens. We recycle and separate our plastics, paper and glass.

CARBON FOOTPRINT - Trees to offset our own carbon footprint. Manakau Lodge requires 112 Native trees and shrubs to offset the emissions from typical household activities. On site to date, we have over 500 native trees, including at least 100 mature Native NZ Kanuka trees.

DARK SKY STATUS- Kaikoura is soon to receive world-recognised "Dark Sky Status". This is to protect local species and foster appreciation for mother earth. Manakau Lodge supports this important status. The only outside lights here point downward and are solar-powered.





4.9 Stars
Google Reviews



manakaulodge.com

+64 (0)21 433590

198b Parsons Rd,
Hapuku, Kaikoura,
New Zealand 7371

@manakaulodge

stay@manakaulodge.com



MANAKAULODGE